



R-TileTM
Flooring Solutions

Design Collection

Stone

R-Tile a Product Range brought to you by

R-TekTM
Manufacturing

Patented new generation of robust, hidden interlock, loose lay LVT. Available in modern designs and with unique colour matching moulded grout edging.



Terrazzo

Dimensions

■ 457mm x 457mm (inc. 2mm grout edging) ■ 7.8mm Thickness ■ 0.7mm wear layer with PU



Shalestone



Granite



Sandstone

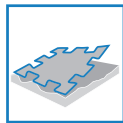
Product Details



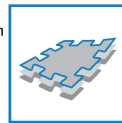
Loose lay - No adhesive required



Robust hidden interlock - Suitable for wheeled traffic up to 1000kg



No subfloor preparation - Can be installed over existing floor coverings, also poor and uneven sub floor



High dimensional stability - Heterogeneous construction with glass fiber reinforcement



Improves acoustic performance - Providing significant noise reduction.



No need to interrupt daily business activity - No loss of revenue



Excellent anti fatigue properties - Comfortable to walk and stand on.



Low VOC emissions meet AgBB requirements, DIBT (Germany) and all indoor air quality (France) (A* label)



3215: Clay - Dark Grey Grout



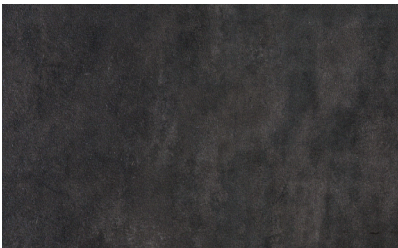
3266: Sandstone - Light Grey Grout



3290: Shalestone - Light Grey Grout



3295: Limestone - White Grout

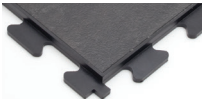


3308: Volcano - Black Grout

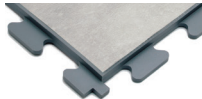


3307: Granite - Dark Grey Grout

Grout Edging Colours



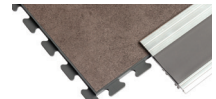
Black



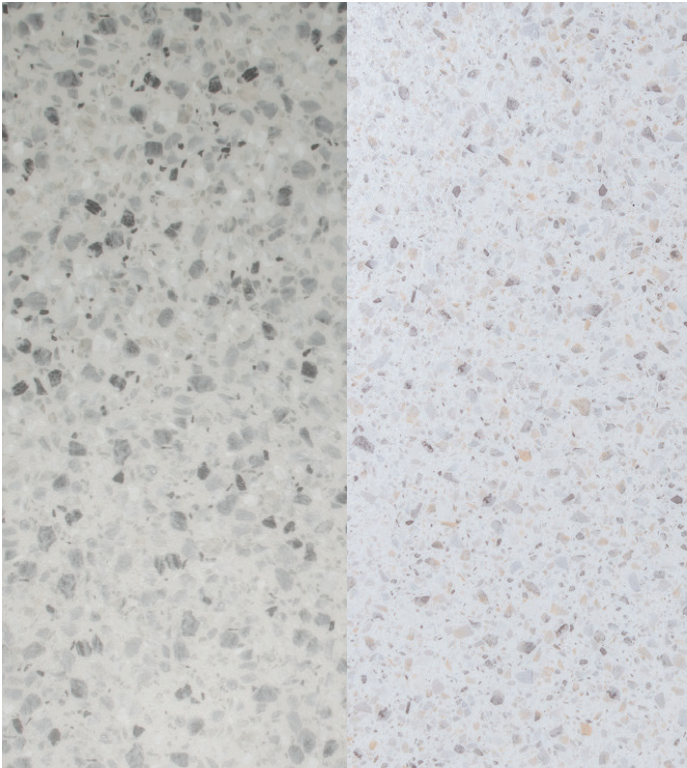
Dark Grey



Light Grey



Finishing profile



3170: Grey Terrazzo

5160: Cream Terrazzo

Installation & Cleaning



Loose lay -
No adhesive required
Installation instructions
available on request.



Easy replacement
or repair of
individual tiles



Easy cleaning and
maintenance due
to PU coating



EN 14041
EN 13893



EN 430



EN 1815



EN 429



EN 427
EN 994



EN 428



EN 13501-1



CE EN14041:2004



EN 105-802



EN 433



EN 433



EN 423



EN 425



EN 660-1
EN 660-2



EN 423

Specification

| TECHNICAL SPECIFICATION | NORM | DESIGN TILE |
|--|---|--|
| Floorcovering to EN 649 | | Heterogeneous PVC |
| Tile Dimensions | | 457mm x 457mm |
| Weight | EN430 | 9.6kg/m ² |
| Hardness | ISO868 | 92 Shore A |
| Material | | PVC SGI 1.45 |
| Thickness | BS EN 428 | 7.8mm |
| Wearing Layer | BS EN 429 | 0.7mm + Polyurethane |
| Protective Layer | | Polyurethane Matt Finish |
| Usage Class | EN 685 | Heavy Commercial/light Industrial |
| Castor Wheel | BS EN 425 | No Damage |
| Indentation | BS EN 433 | 0.05mm |
| Fire Class | EN 13501 -1 | BFL s1 |
| Surface Resistance | BS EN 1081 | Horizontal: >1.0 x 10 ⁴ Ω Vertical: 1.1 x 10 ¹² Ω |
| Anti Slip | BS EN 13893 Deutsche Norm DIN 51130 | R9/R11 |
| Chemical Resistance | BS EN 423 | Good |
| Light Fastness [Blue Wool Standard] | BS EN 105-B02 | 6-8 Dependent on design |
| Thermal Resistance | ISO 8302 | +/- 0.013m ² K/W |
| Anti-Static Performance | BS EN 1815 | Rubber sole: -1.0kV PVC sole: -1.7kV |
| Dimensional Stability Before Exposure to Heat | BS EN 434 | Yes |
| Density | BS EN 436: 1994 | Average 1404kg/m ² |
| Surface Treatment | PUR | PUR |
| Toxicity | EN71 | Non-Toxic |
| VOC Emissions | AgBB/DIBt | Certified |

Recyclable

The R-Tek range of tiles are environmentally friendly, once they have reached the end of their useful life we can collect the tiles and recycle them to produce the next generation of R-Tile. There is also no wastage in the manufacture of R-Tiles as any rejected tiles and surplus material is recycled on site.

BRE - Green Guide Ratings A+

