



R-Tile Retail Flooring Solutions

r-tileretailflooring.com

R-TekTM
Manufacturing

R-Tile - Retail Floor Flooring



R-TekTM
Manufacturing

R-TileTM
Flooring Solutions

☎ 0800 0284722
☎ +44 (0)28 37510367
✉ info@r-tekmanufacturingltd.com



www.r-tekmanufacturingltd.com



R-Tek Manufacturing is a private limited company and was established in 2009 specialising in the manufacture and supply of a modern range of interlocking floor tiles for the flooring industry, trade marked R-Tile.

The company is located in Tyrone Northern Ireland, operating from a 9000sqm facility catering to R-Tek's ever growing needs.

R-Tek manufacture in house the R-Tile range of interlocking floor tiles utilising 18 state of the art moulding machines and operates 24 hours, 5 days a week.

R-Tek specialise not only in the manufacture of the R-Tile product range but also has a strong R&D team that have developed a number of innovative new products to include the company's modern and more robust interlock textured dove tail, the latest retail flooring solution in the Urban tile range and the patented design tile which is a revolutionary new product to the retail market.

R-Tek is ISO 9001 accredited and has built a reputation on supplying high quality products

backed up with an excellent network of distribution which has allowed the company to become a market leader for interlocking floor tiles.

All products are produced in accordance with CE 14041:2004 and the product range is accredited to meet all relevant UK and European standards.

All materials utilised to produce the R-Tile product range are REACH compliant.

The R-Tile product range are rated A+ according to BREEM standards.

R-Tek also operates strictly in accordance with environmental standards ISO 14001-2004 whereby all waste is 100% recycled and includes all reject tiles etc. which are granulated and reprocessed to produce new black tiles.
















Advantages of R-Tile

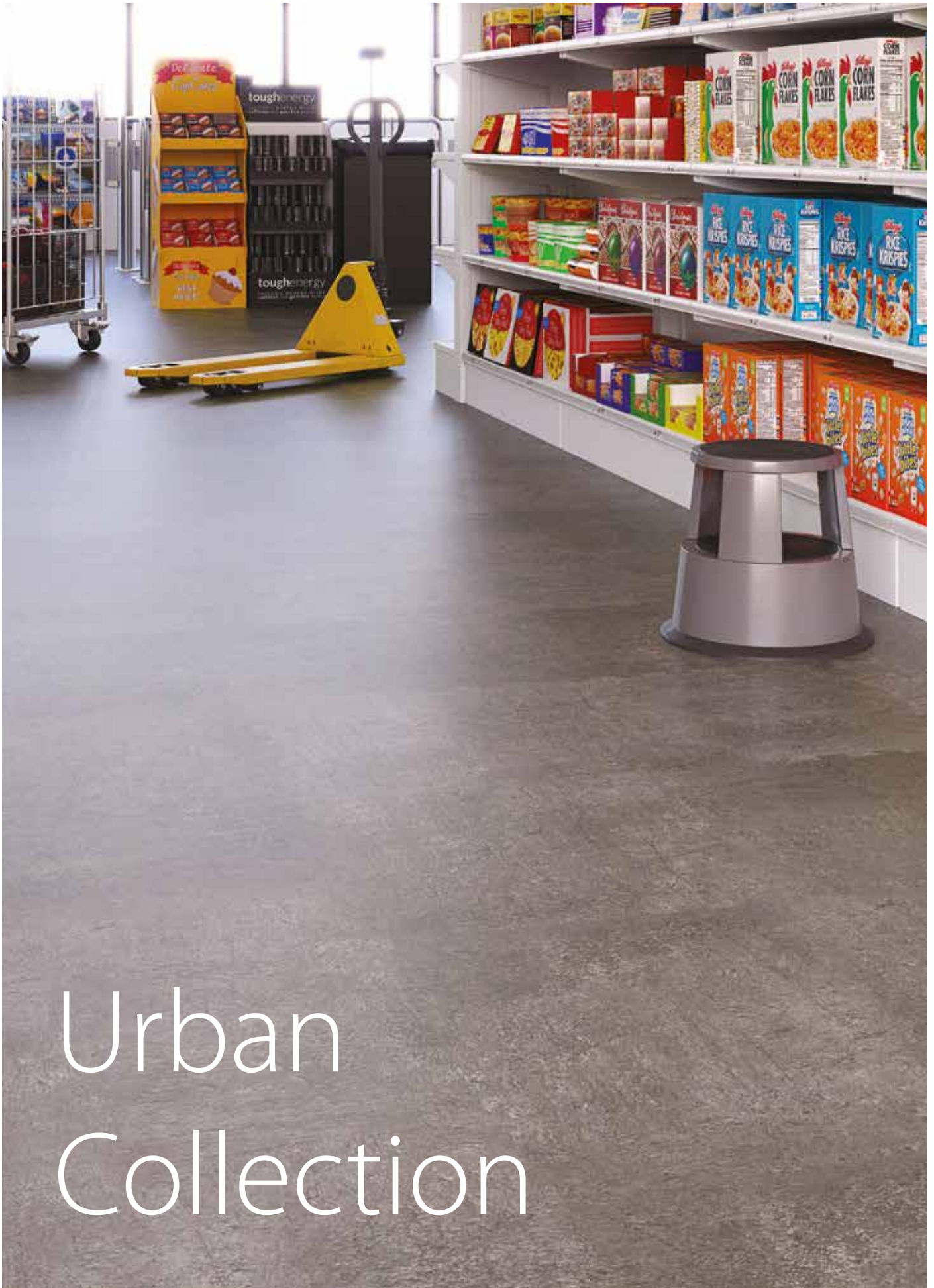
R-Tek Manufacturing provide robust, quality interlocking floor tile solutions which are ideal for retail and commercial use.

Key advantages of R-Tile product range

 <p>Loose lay system No adhesive required.</p>	 <p>Suitable for manual and electric pallet trucks.</p>	 <p>Competitive rates.</p>
 <p>Easy to install.</p>	 <p>We offer a free site survey.</p>	 <p>No damp proof membrane, screed or adhesives required.</p>
 <p>Reduces dust and noise.</p>	 <p>Excellent durability and slip resistance.</p>	 <p>Warm – insulates the floor.</p>
 <p>Fire retardant – Bfl S1.</p>	 <p>Reduces fatigue.</p>	 <p>Easy to clean and maintain.</p>
 <p>Lower life cycle cost.</p>	 <p>Easy to move and reuse.</p>	 <p>CE accredited.</p>
 <p>Environmentally sustainable.</p>	 <p>Choice of designs.</p>	 <p>UK Manufacturers.</p>

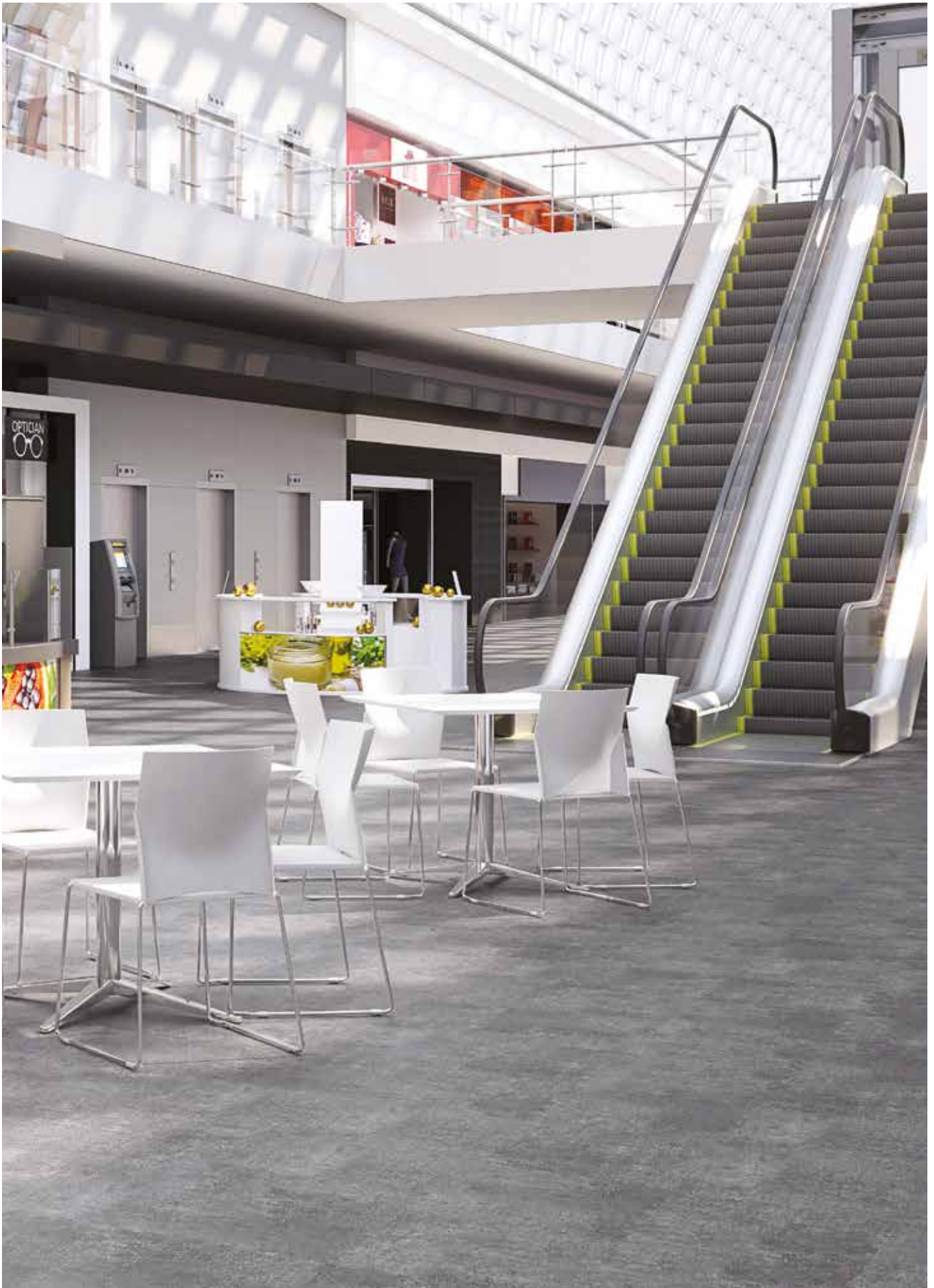
Technical Certifications

							
<p>CE EN14041:2004</p>							
	<p>EN 14041, EN 13893</p>	<p>EN 430</p>	<p>EN 1815</p>	<p>EN 429</p>	<p>EN 427 EN 994</p>	<p>EN 428</p>	<p>EN 13501-1</p>
	<p>EN 105-B02</p>	<p>EN 433</p>	<p>EN 423</p>	<p>EN 425</p>	<p>EN 660-1 EN 660-2</p>	<p>EN 423</p>	<p>EN 423</p>



Urban Collection

R-Tile - Retail Floor Flooring



Urban Tile is a new robust seamless interlocking loose lay floor system available in modern decor finishes.

Urban Tile is our new and latest range offering a modern seamless finish perfect for any store. Just like our other ranges it offers quick and easy install to help with saving cost and time.

The Urban Tile is a heterogeneous, 100% recycled PVC, heavy-duty interlocking 6.5mm tile. This robust tile is suitable for high traffic retail areas.

The commercial classification is 34. The Urban Tile is suitable for wheeled traffic up to 1200kg and can be quickly installed over poor subfloors, making this tile the perfect flooring for renovation projects.

The 0.7WL product is suitable for supermarket environments and the 0.5WL version is for most other retail applications.

Dimensions

■ 579mm x 579mm ■ 6.5mm Thickness ■ PU with 0.7/0.55mm wear layer.

Designs and Layout

- Easy to install: modular tile format.
- 13 finishes.



R-Tile - Retail Floor Flooring



Urban Tile Collection

The Urban Tile is available in 13 modern designs

Concrete 0.70WL



Grey - 59234



Brown - 59232



Charcoal - 59233



Brown Polished - 4118

Stone 0.70WL



Bronze - 40876



Shale - 46954

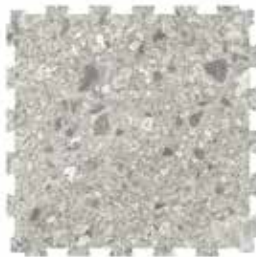


Clay - 52155

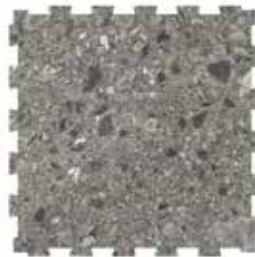
Pebble 0.55WL



Brown Pebble - 46151



Grey Pebble - 46921

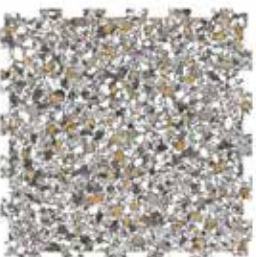


Dark Grey Pebble - 46961

Terrazzo 0.55WL



Cream Terrazzo - 46164

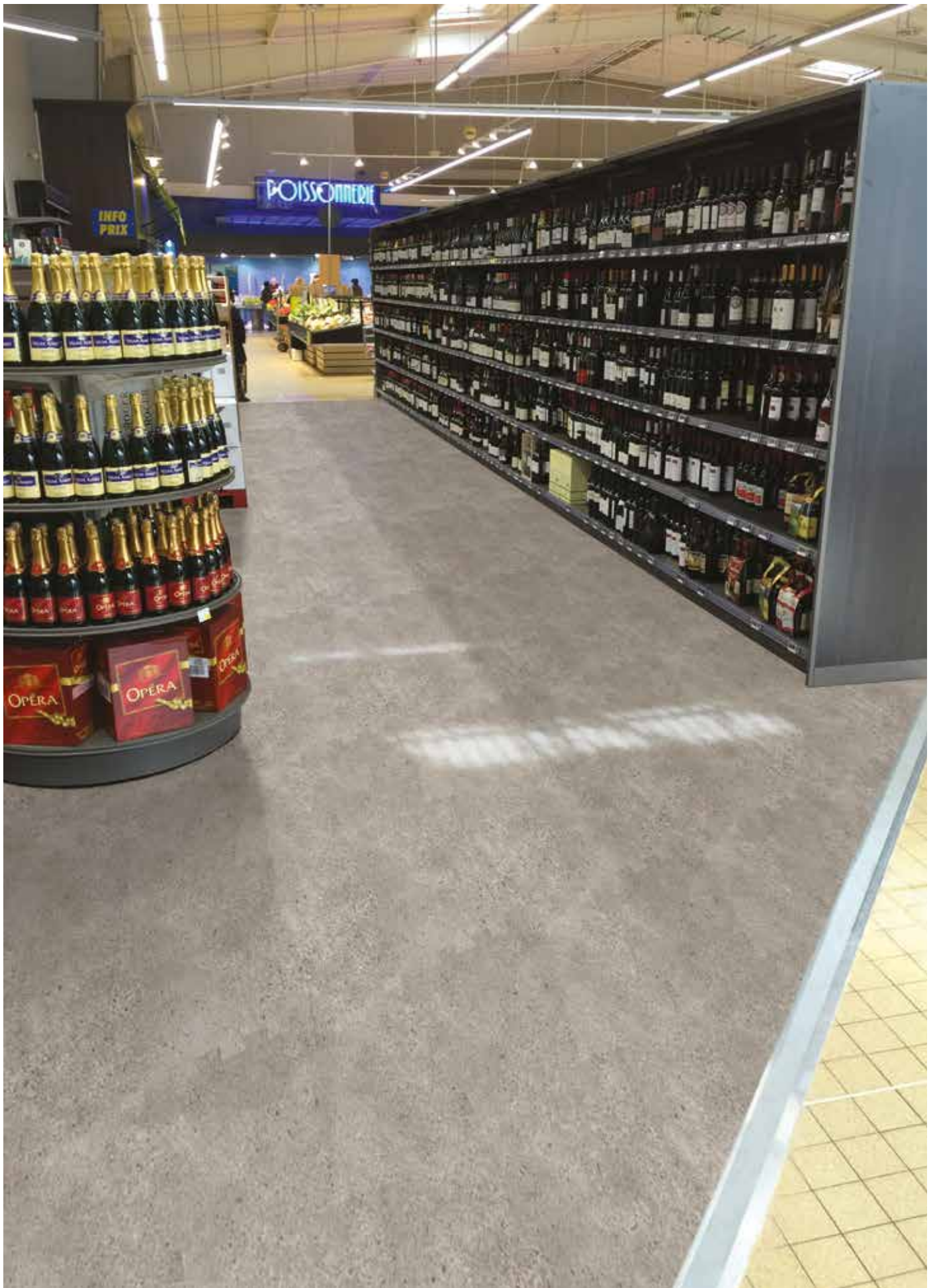


Brown Terrazzo - 46921K



Grey Terrazzo - 46946

R-Tile - Retail Floor Flooring



Product Construction

Urban Tile is a multi-layered interlocking loose lay vinyl tile with polyurethane treatment (PUR+), 6.5mm thick with a dovetail joint, abrasion group T. It is manufactured by R-Tek using a continuous patented high pressure process

The Urban Tile wear layer is reinforced with oblong fillers that offer an outstanding resistance to traffic.

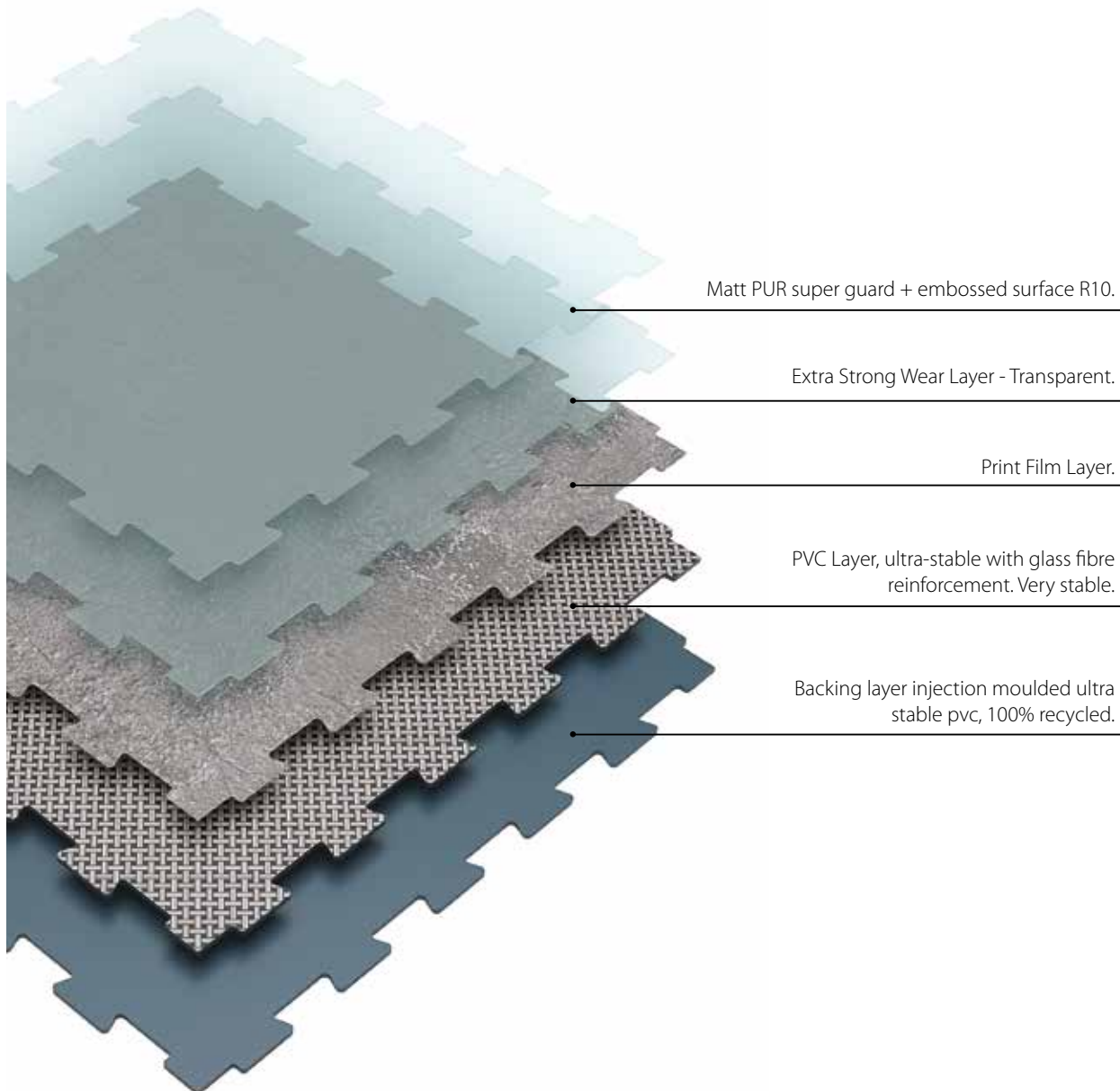
Urban Tile is reinforced with a ultra-

stable glass fiber grid on an pressed homogeneous layer.

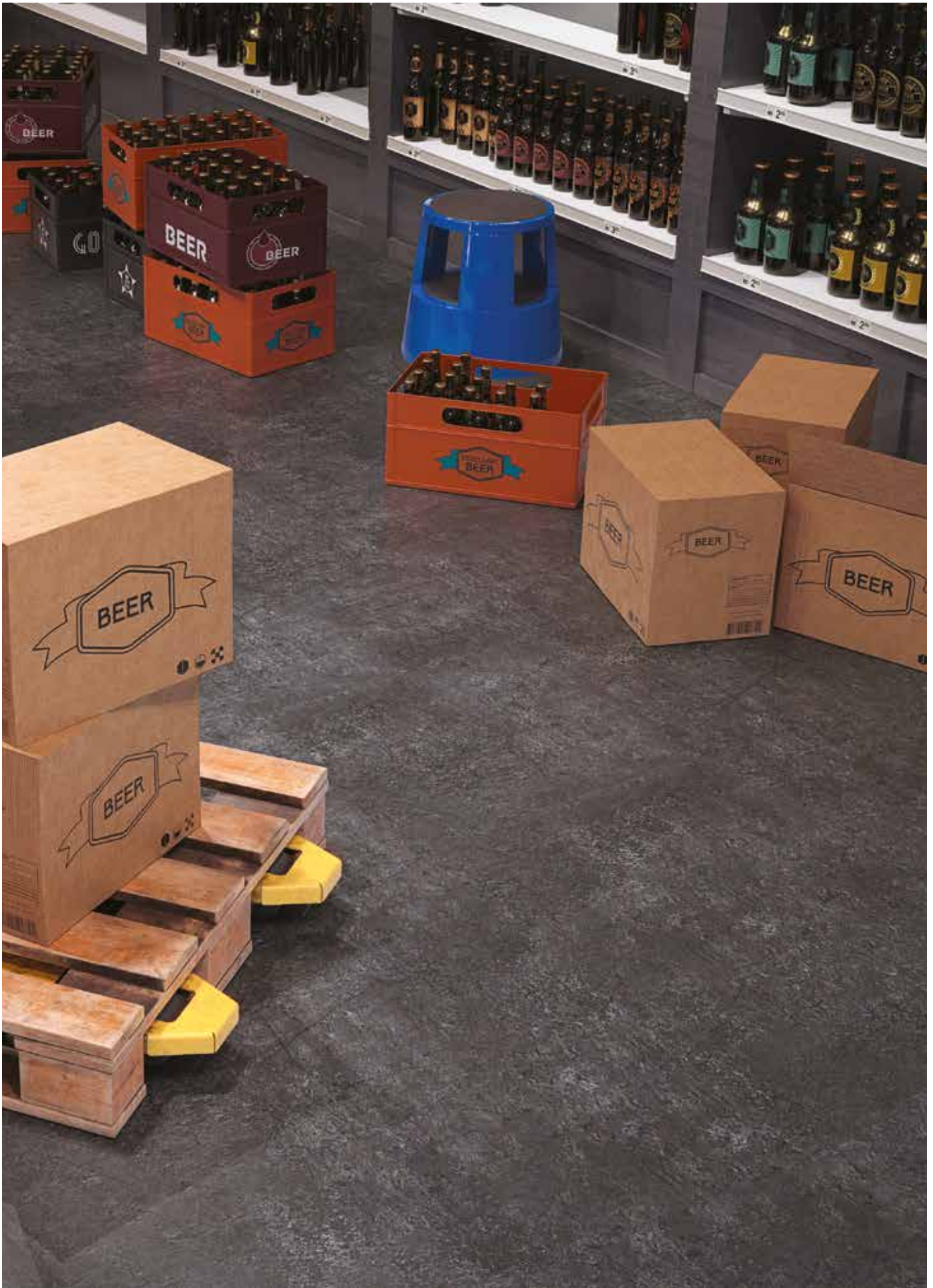
Urban Tile backing is an homogeneous component made from ultra-stable material using a high pressure process.

It is made of 100% controlled recycled materials.

It is 100% recyclable and made with up to 80% recycled content.



R-Tile - Retail Floor Flooring



Technical Specification

DESCRIPTION

Thickness	EN ISO 24342	6.5mm
Wear Layer	EN ISO 24342	0.7/0.55mm
Weight	EN ISO 24342	9.6kg/m ²
Tile Dimensions	ISO 24342	579mm x 579mm

CLASSIFICATION

Classification	ISO 20582	34
Packaging	3 Tiles	1m ² /Box
Fire Class	EN 13501.1	Bfl-s1
Anti-Static	BS EN 1815	Rubber Sole: -1.0kV PVC Sole: -1.7kV
Anti-slip (coefficient)	BS EN 13893	>.30
Anti-slip	BS EN 51130	R10

PERFORMANCE

Abrasion	EN 660.2	T
Indentation	ISO 24342	<0.10mm
Acoustic	ISO 717.2	12 db
Caster Wheel	EN 425	No Damage
Dimensional Stability	ISO 23999	0.15%
Thermal Resistance	ISO 8302	+/- 0.013m ² K/W
Chemical Resistance	BS EN 423	Good

ENVIRONMENTAL ACCREDITATIONS

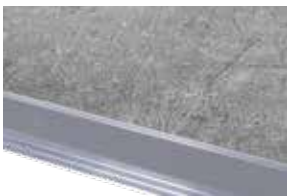
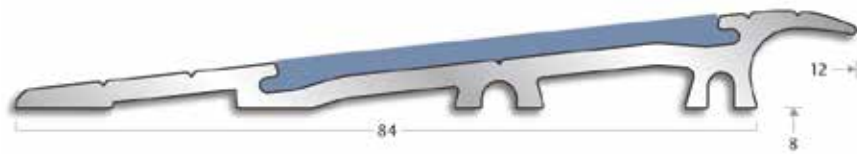
TVOC after 28 days	ISO 16000-6	<100 µg/m ³
Certification	-	Floorscore®

Static & Dynamic Loading

SIZE	STATIC (Point)	DYNAMIC
Urban Tile	85kg/cm ²	65kg/cm ²

Urban Collection Accessories

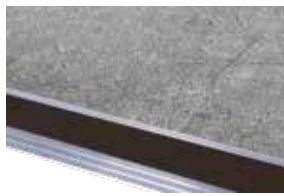
Profile Edge



Grey



Black



Brown

The profiles are designed for use in the most demanding environments where frequent heavy foot and trolley traffic can be expected.

Manufactured using high quality aluminium to withstand repeated heavy traffic impacts. It provides a safe transition between wood, tiles and other resilient floor coverings.

This profile incorporates a slip-resistant pvc insert available in 3 options: grey, black and brown.

SPECIFICATION

Type:	Ramp Profile
Environment:	Interior
Material:	Aluminium/pvc
Width:	84mm
Gauge:	8mm
Used with:	Wood, ceramic tiles
Length:	2.50m

INSERT OPTIONS

Interior:	ELINS50 (25m coil)
-----------	--------------------



Mat Entrance

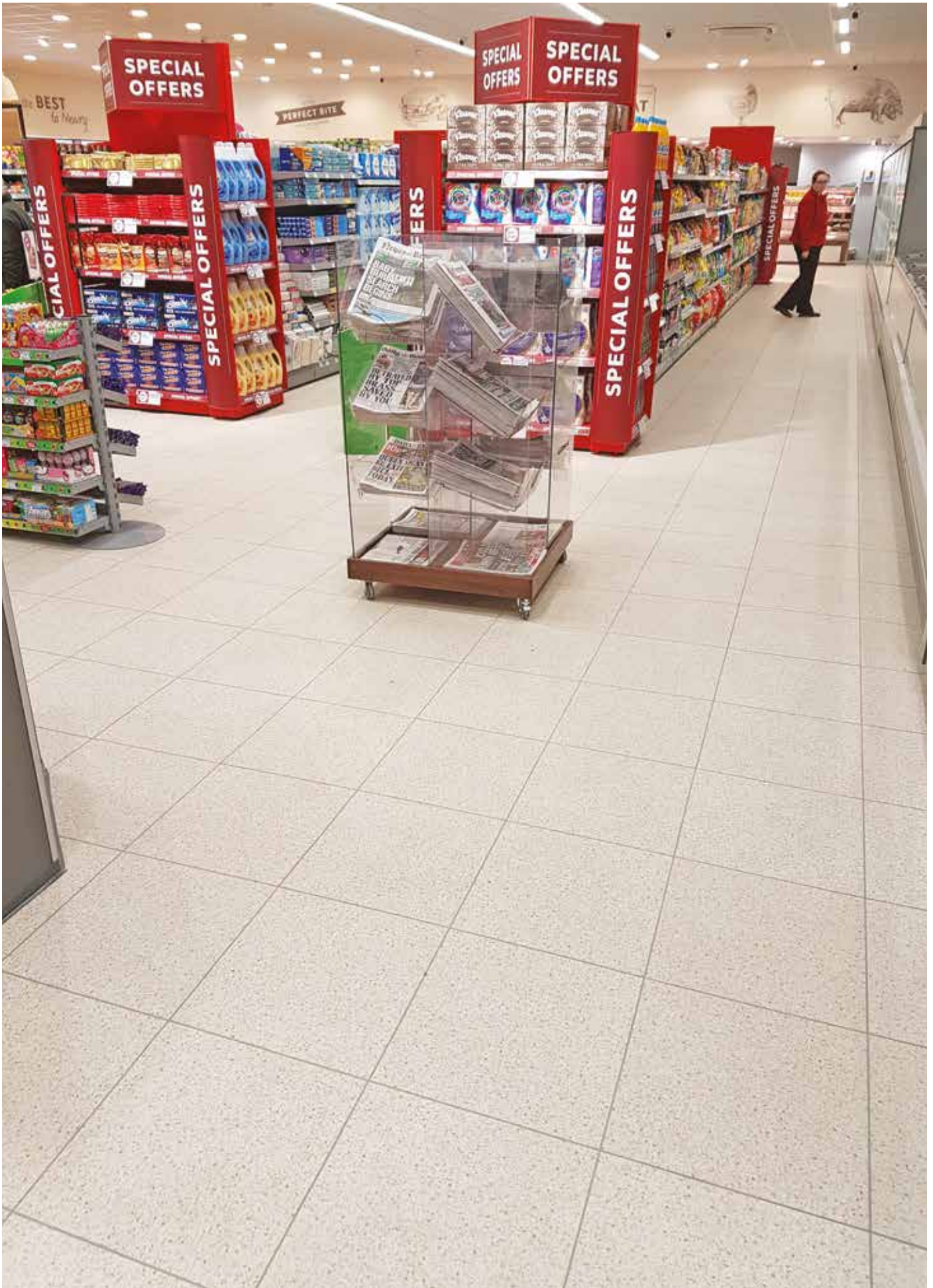
- Same thickness as Urban Tiles.
- Full kit ready-to-lay including the mat, frame sections and fastenings.
- Withstands intensive footfall.
- Surface not damaged (no adhesives or screws).
- Full 100% looselay system.





Design
Collection

R-Tile - Retail Floor Flooring

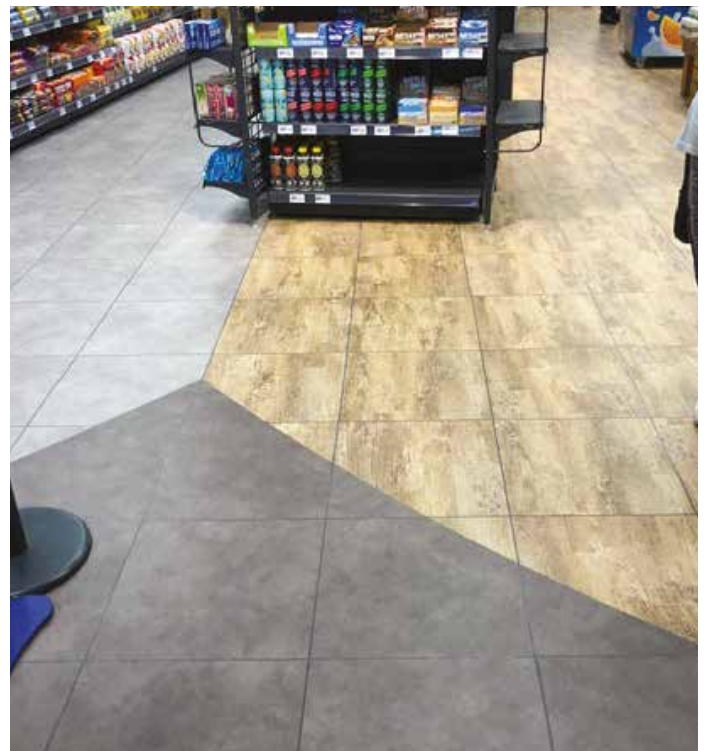


We have ranges that cover everything from large shopping centres to small petrol station

Patented new generation of robust hidden interlock, loose lay LVT. Available in modern designs and with unique colour matching moulded grout edging

With the Design Tile collection being used by some of the worlds leading brands below it is a clear winner when it comes to quality durable flooring.

Design and versatility was another key aspect when we looked at developing the collection. Not only do we have both wood and stone designs but these can be combined and custom fitted for a unique look. We have found certain stores and brands use stone and wood collections combined to differentiate areas within the store.



R-Tile - Retail Floor Flooring



Design Collection

The Design Collection consists of 14 modern designs

Stone
0.70WL + 0.55WL



Clay - 5215



Sandstone - 3266



Shalestone - 3290



Limestone - 3295



Volcano - 3308



Granite - 3307



Grey Terrazzo - 3170



Polished Concrete - 4118



Cream Terrazzo - 51604

Wood
0.70WL



Dark Oak - 22003



Light Oak - 22001



Vintage Ash - 78720

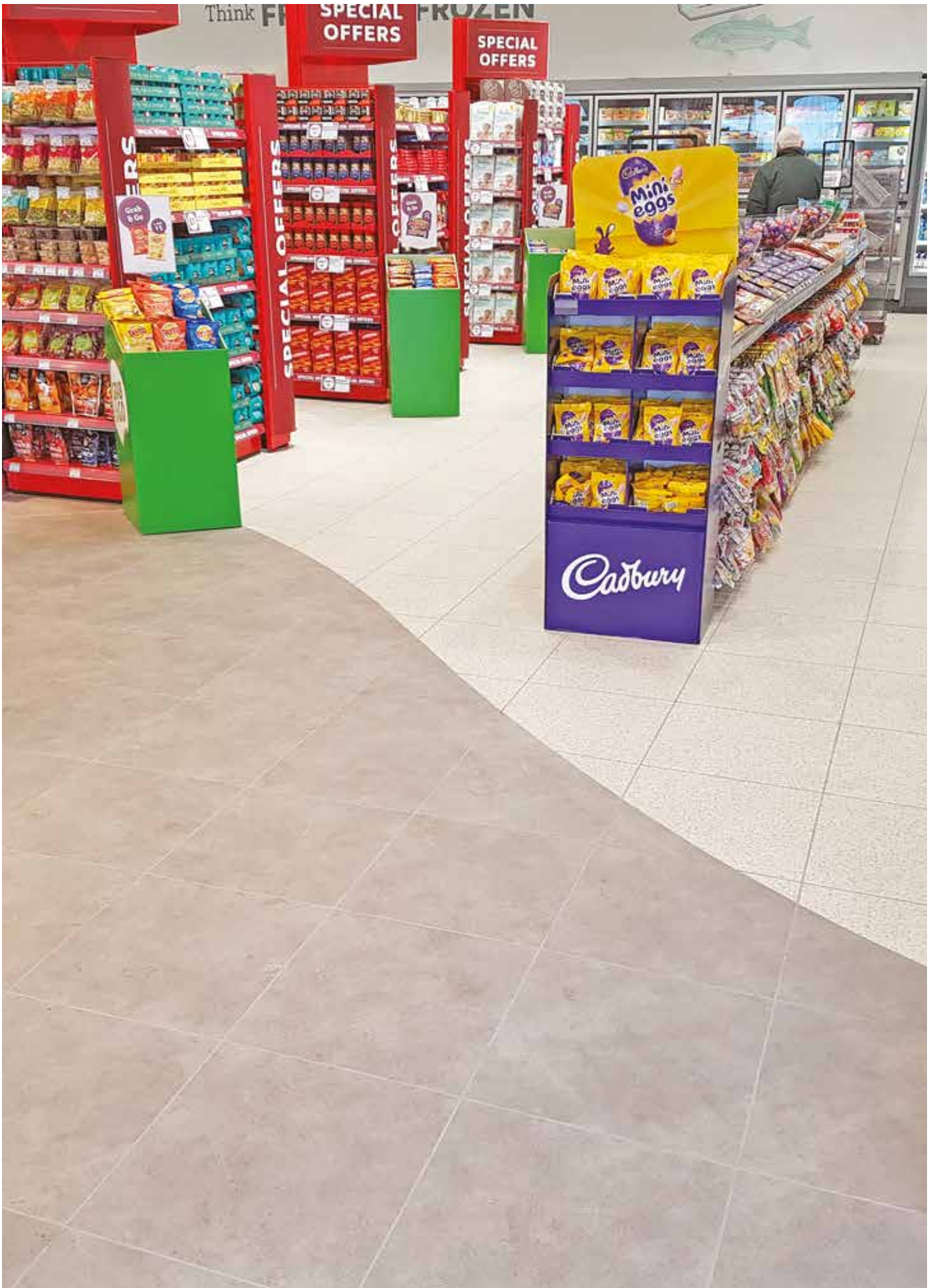


Vintage Sand - 78719



Vintage Maple - 78714

R-Tile - Retail Floor Flooring



Product Construction

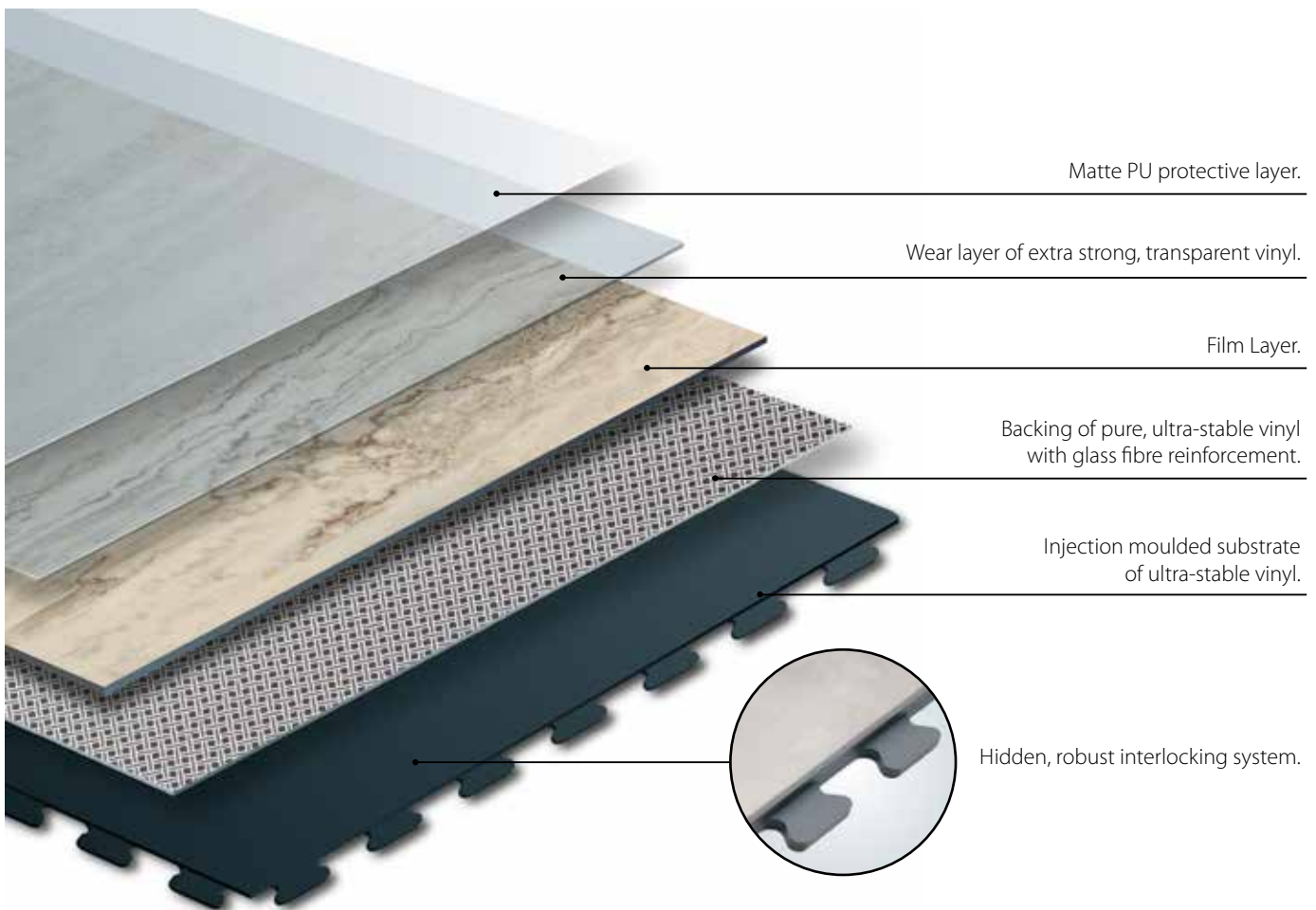
Design Tile is a multi-layered interlocking loose-lay vinyl tile with polyurethane treatment (PUR+), 7.8mm thick with a dovetail hidden joint, abrasion group T. It is manufactured by R-Tek using a continuous patented high pressure process.

Design Tile is reinforced with an ultra-stable glass fiber grid on an pressed homogeneous layer.

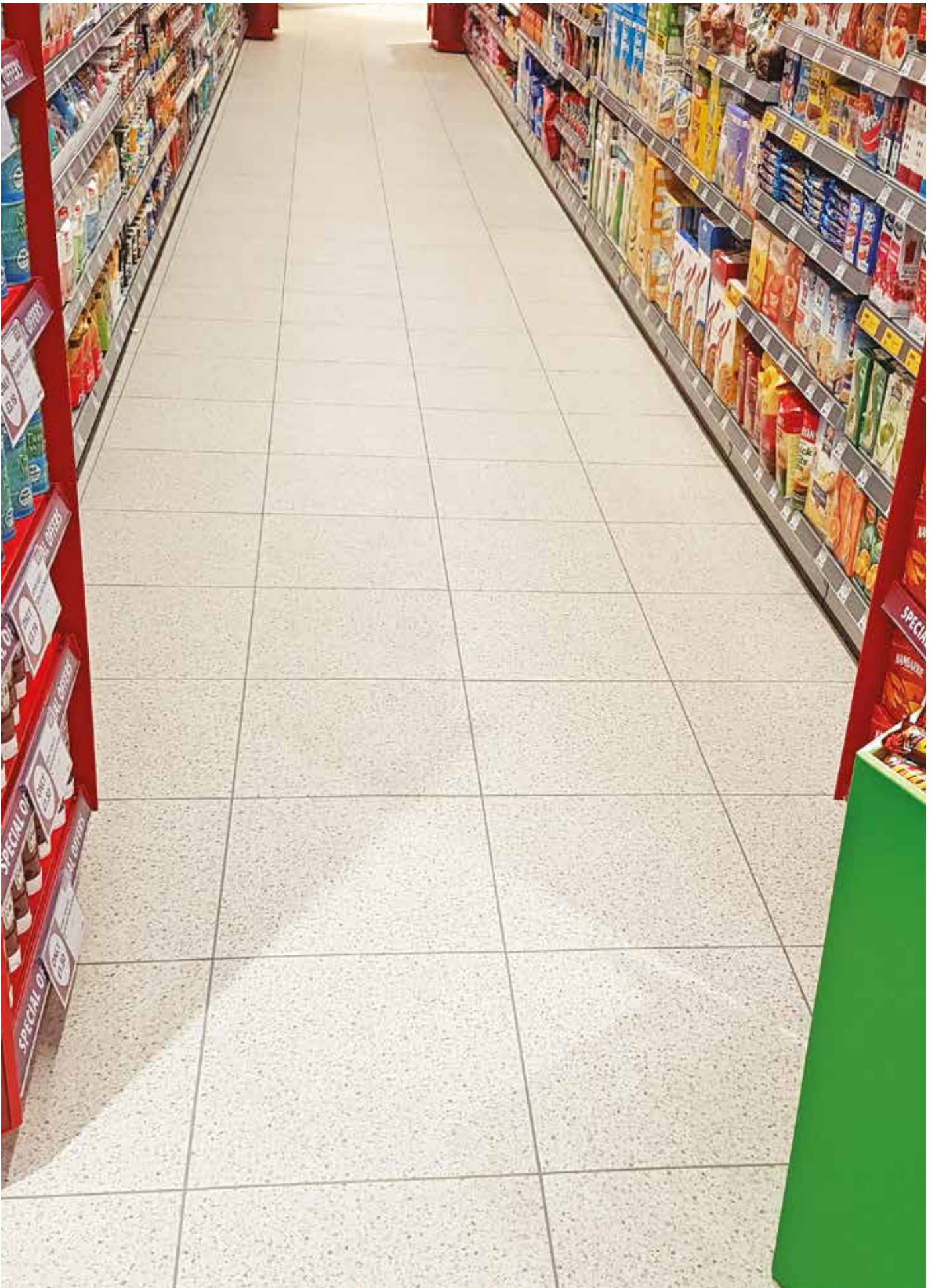
Design Tile backing is an injection moulded homogeneous component made from an ultra-stable material.

It is made of 100% controlled recycled materials.

It is 100% recyclable and made with up to 80% recycled content.



R-Tile - Retail Floor Flooring



Technical Specification

DESCRIPTION

Thickness	EN ISO 24346 [EN 428]	7.8mm
Wear Layer	EN ISO 2434 [EN 429]	0.7mm + Polyurethane
Weight	EN ISO 23997 [EN430]	9.6kg/m ²
Tile Dimensions	EN ISO 24342 [EN 427]	457mm x 457mm

CLASSIFICATION

Norm / Product specification	-	EN ISO 10582 [EN 6491]
European classification	EN ISO 10874 [EN 685]	34/43
Fire Class	EN 13 501-1	Bfl-s1
Static electrical propensity	EN 1815	<2 kV
Slip resistance	DIN 51130	R9/R11

PERFORMANCE

Wear resistance	EN 660.2	<3mm ³
Wear group	NF 189	Group T
Dimensional stability	EN ISO 23999-1 [EN 434]	<0.20 No Curling
Residual indentation	EN ISO 24343-1 [EN 433]	<0.05
Castor chair test (type W)	ISO 4918 [EN 425]	No Change
Shore hardness	EN ISO 868	>92 HA
Thermal conductivity	EN ISO 10456 [EN12524]	0.25 w/(m.K)
Colour fastness	EN 20 105 - B02	>6 degree
Surface treatment	-	PUR+
Chemical products resistance	EN ISO 26987 [EN 423]	OK

ENVIRONMENTAL ACCREDITATIONS

TVOC after 28 days	ISO 16000-6	<100 µg/m ³
Certification	-	Floorscore®

Static & Dynamic Loading

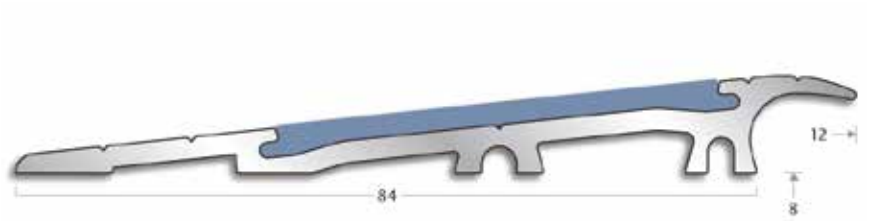
SIZE	STATIC (Point)	DYNAMIC
Design Tile	100kg/cm ²	75kg/cm ²

R-Tile - Retail Floor Flooring



Design Collection Accessories

Profile Edge

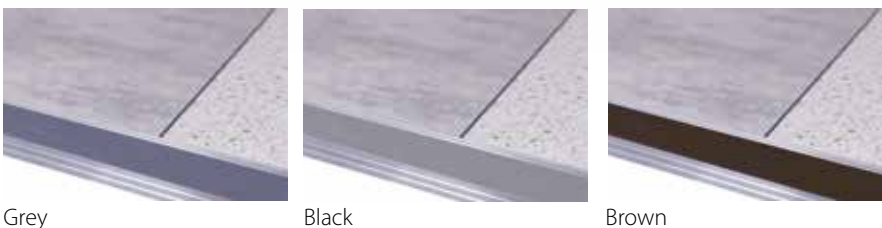


SPECIFICATION

Type:	Ramp Profile
Environment:	Interior
Material:	Aluminium/pvc
Width:	84mm
Gauge:	8mm
Used with:	Wood, ceramic tiles
Length:	2.50m

INSERT OPTIONS

Interior:	ELINS50 (25m coil)
-----------	--------------------



The profiles are designed for use in the most demanding environments where frequent heavy foot and trolley traffic can be expected.

Manufactured using high quality aluminium to withstand repeated heavy traffic impacts. It provides a safe transition between wood, tiles and other resilient floor coverings.

This profile incorporates a slip-resistant pvc insert available in 3 options: grey, black and brown.



Mat Entrance

- Same thickness as Urban Tiles.
- Full kit ready-to-lay including the mat, frame sections and fastenings.
- Withstands intensive footfall.
- Surface not damaged (no adhesives or screws).
- Full 100% looselay system.



R-Tile - Retail Floor Flooring



Heavy Traffic Resistant

Dynamic Load: up to 1200kg

Static Load: up to 75kg/cm³

- Resistant to heavy traffic.
- Fast renovation: can be installed over existing floor covering.
- No subfloor preparation, no adhesive and no production stoppage (no loss or revenue).
- Polyurethane surface treatment PUR+ for ease of maintenance.
- 13 designs available. Mix and match colours to create zoning.



Installation on any type of surface



Resin



Concrete



Wet Surfaces
up to 7% humidity / 92%RH



Tiles



Asbestos

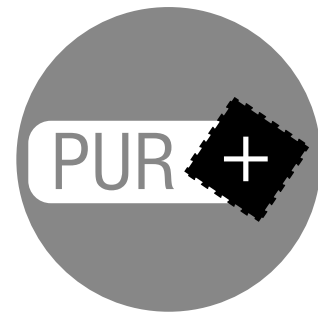
Hard - Wearing



- Tiles are injection moulded and pressed.



- 0.5 - 0.7mm wear layer.



- PUR + surface treatment enabling easy maintenance.

Comfort & Safety



- 12dB less noise than tiling when users walk on it.
- Underfoot comfort: reduces fatigue.



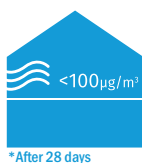
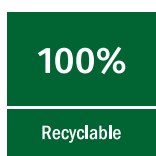
- High slip-resistance (R9/R11 rated).



- Softer than ceramic tiles in the event of impact.

Recyclable

BRE-Green Guide Ratings A+





Sustainability



COMPOSITION

- 100% REACH compliant.
- FREE of Formaldehyde.
- FREE of heavy metals.
- FREE of solvent.



LIFE CYCLE ANALYSIS

- Eco-designed according to a product specific Life Cycle Analysis.
- Product specific EPD (Environmental Products Declaration) available.
- Manufactured in an ISO 14001 compliant site.



INDOOR AIR QUALITY

- TVOC emissions 10 times better than norm requirements (TVOC <100ug/m3 after 28 days).
- M1 certified.
- Comply with AgBB protocol.
- No formaldehyde emissions.



RECYCLED CONTENT

- 80% recycled content.
- 100% REACH compliant recycled content.



RECYCLING

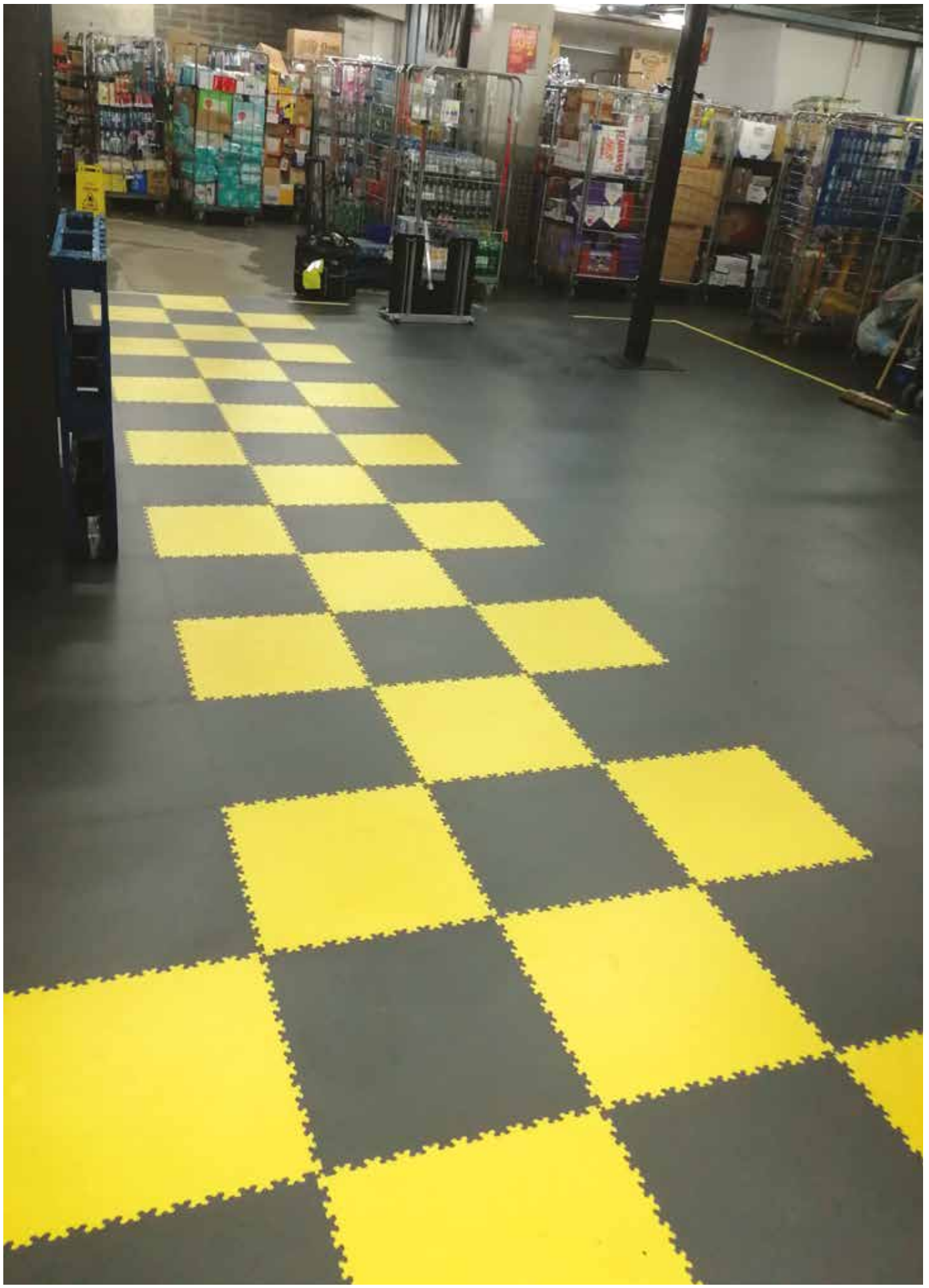
- 100% recyclable product.



INSTALLATION

- Adhesive free installation.

R-Tile - Retail Floor Flooring



The perfect back of house and warehouse solution

Homogeneous interlocking tile

R-Tile 7mm industrial spec is now being used by some of the largest brands around the world. Its excellent flexibility and Durability means it can be used in large storage warehouses and back of house in retail stores.

The R-Tile is offered in a range of colours to help clients mark out certain areas or even to match their brand colours.

What makes the R-Tile something perfect for back of house and warehouse projects?

The R-Tile was designed and engineered with high traffic and areas using small vehicles such as pallet trucks and forklifts in mind. The robust interlock means that it can take heavy weight and high foot traffic with ease.



R-Tile - Retail Floor Flooring



Installation

RECOMMENDED METHOD OF INSTALLATION: These notes have been prepared as a guide only, the information is supplied in good faith but without guarantee as site conditions vary and are beyond our control.

1. POINTS TO CONSIDER BEFORE YOU START YOUR INSTALLATION:

LOOSE LAY OR GLUE?

R-Tile can be installed over any hard surface and in most situations will not require gluing. We recommended gluing the tiles in the following situations.

- **DIRECT SUNLIGHT**
It is advisable to glue the tiles in areas subject to direct sunlight such as glass fronted entrance foyers, shop fronts, south facing loading bay doors etc. It is possible that the tiles in direct sunlight will get very hot and expand at a faster and higher rate than the remainder of the floor.
- **UV STABILITY**
R-Tile is not recommended for external use and the colours are not UV stable.
- **BATCH CONTROL**
We are unable to guarantee 100% colour consistency between individual production batches. Each individual order will be supplied from a single batch but in the event that you need additional tiles or wish to extend the area we cannot guarantee subsequent orders will be supplied from the same batch.



2. TOOLS AND EQUIPMENT:

All you need is a non-marking rubber mallet or engineering hammer, chalk line or another method of keeping the tiles square and a way to cut the tiles. R-Tile can be cut using several methods, a lot will depend on personal preference, experience and the tools you have on hand but we recommend the following:

- Magnum shear/guillotine.
- Stanley/utility knife with a concave blade
Always use a straight edge and wear cut proof gloves.
- Electric jig saw with a medium or rough wood blade.
- Table saw or band saw with a medium or rough wood blade.



GUILLOTINE

3. INSTALLATION:

KEY SUMMARY :

- Let the tiles acclimatise, the minimum recommended installation temperature is 15°C.
- Split the pallet and spread the tiles across the floor prior to starting installation.
- Start from the centre and create your square using a chalk line or laser line.
- Don't force the tiles, offer up the corner of the tile and gently hammer the joints together.
- Allow the floor to settle before measuring and cutting up against walls and fixed points.
- Leave a minimum of 5mm gap between the tiles and any fixed point.
- Create a template for difficult/complicated cuts.



ELECTRIC JIGSAW



**STANLEY KNIFE WITH
CONCAVE BLADE**



R-Tile installations are as simple as putting together a jigsaw puzzle. If the joints don't fit together without you having to force them, chances are you are doing something wrong.

The first sign of trouble will always be if the tiles do not connect together with a simple tap of the hammer, this will indicate that the tiles are not lined correctly.

STEP 1

TEMPERATURE – ALLOW THE TILES TO ACCLIMATISE

- Installation should not take place at temperatures below 15°C.
- Do not try and install the tiles straight after delivery, the tiles must be allowed to acclimatise to the ambient room temperature prior to installation. We recommend you allow 24 hours but this will be dependent on temperature, the warmer it is the quicker the tiles will acclimatise. If time is short we recommend you breakdown the pallet of tiles into small packs to help them acclimatise and settle.
- If installation has to take place at a temperature below 15°C leave a larger expansion gap between the tiles and any fixed point and/or incorporate an expansion gap every 8 to 10 meters.



STEP 2

PREPARATION

- Sweep or vacuum the floor to remove any loose impediments.
- Remove any high points in the floor.
- Fill any holes with a rapid setting floor repair compound such as Ardurapid A46 or similar.
- For uneven surfaces that require smoothing use a soothing compound such as Ardex Feather Finish.



STEP 3

SETTING OUT

- Setting out/the starting point is different for the open joint and hidden joint tiles.
- Important: It is essential for both that the tiles are kept square to each other at all times. We strongly recommend that you use a chalk line; laser line or carpenters square to set out the site and ensure you keep the tiles right angled to each other.



STEP 4

INSTALLATION METHOD

- Once you have identified your starting point and created your straight lines, it's time to start fitting the tiles.
- Our first recommendation is to lay the tiles out on the floor; this will allow them to settle.
- Next, connect the tiles together by offering up the tile and lining up the corner, ensuring the joints are in line.
- Starting from the corner, use a rubber mallet to gently tap the joints together.

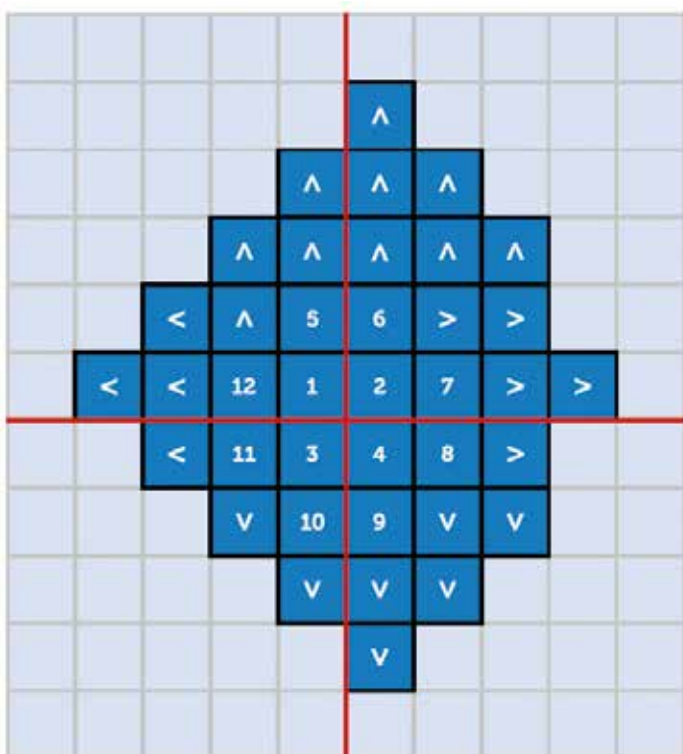


R-Tile - Retail Floor Flooring

HERE TO START: The starting point for the open joint tiles should always be as close to the centre of the room as possible. The hidden joint tile should start from one corner of the room.

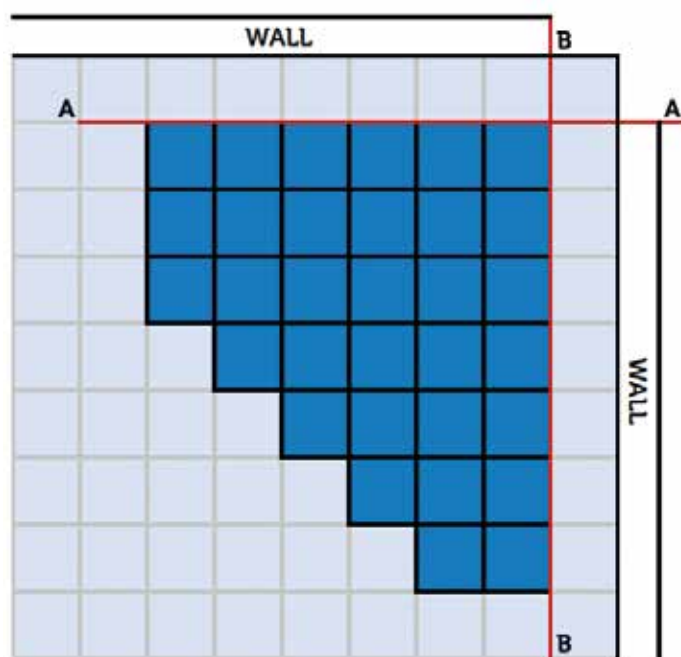
INSTALLATION INSTRUCTIONS FOR R-TILE OPEN JOIN TILES (Warehouse & Urban):

1. Start from as close to the centre of the room as possible.
2. Use a chalk or laser to create lines A-A and B-B. Make sure these lines are at right angles.
3. Using the rubber mallet, tap the line together, starting at the corner of the tile & working your way outwards towards the edge of the tile.
4. Work out in a circular pattern filling in the corners.
5. Once all full tiles have been installed allow the floor to settle before measuring and fitting finishing cuts.
6. Ensure that you allow at least 5mm expansion gap between the tiles and any fixed point.



INSTALLATION INSTRUCTIONS FOR R-TILE HIDDEN JOINT TILES (Design Tile):

1. Carefully measure 20cms out at each end of wall and use a chalk or laser to create lines A-A & B-B. Make sure the lines are at 90 degrees to each other.
2. Lay the tiles with the hidden joint to the walls and the exposed joints on the left. Very important – lay the first few rows perfectly straight, any mistake will impact the entire installation.
3. Lay the tiles from right to left always placing the hidden edge on top of the exposed. Line up the tabs at the corner to help align tiles. Install one row at a time, completing each row before beginning the next.
4. Cut in perimeter tiles allowing at least a 5mm expansion gap between the tile and any fixed point.



4. FITTING AND FINISHING

FOR THE PERFECT FINISH:

- Leave a minimum of a 5mm gap between the tiles and any fixed point (walls and machinery).
- Cover the 5mm expansion gap between the tiles and the walls with skirting profiles.
- Undercut wood doorjambes and slip the tiles underneath.
- With metal doorjambes cut the flooring material to within 5mm and then chalk around the jamb.
- Use R-Tile ramp and corner sections to create a mat area or provide safe access to wheeled traffic. (warehouse)
- The tiles may require gluing if they will be in direct sunlight.
- To keep your floor looking good give it a sweep on a regular basis and use a rotary scrubber dryer for routine maintenance.



R-Tile - Retail Floor Flooring



Cleaning & Maintenance

RECOMMENDED CLEANING FOR SMOOTH TEXTURED SURFACES

It is critical that the correct cleaning regime is used to maintain your R-TEK floor surface.

If the appropriate cleaning machine is used with the correct cleaning chemical this will ensure that your floor surface will always have a clean appearance, whilst maintaining a safe level slip resistance.

We highly recommend that a scrubber dryer with the appropriate scrubber dryer detergent and pad is used for the cleaning of all R-TEK floors. We can suggest machines to clean all sizes of floor surfaces. It is important that the machine you use has sufficient pad pressure and has good squeezy blade surface contact to produce an efficient clean.

It is also important that your floor surface is swept thoroughly before a scrubber dryer is used if you suffer with high volumes of dust, swarf and any other debris. We would suggest the use of a high quality range sweeper, which is ideal for keeping your floors dust free.

Depending on your requirements, we can also suggest the use of a combination machine, which can both sweep and scrub and dry all in one process.

If you do not suffer with dust and debris, then a scrubber drier machine will be adequate.

RECOMMENDED CLEANING FOR SMOOTH TEXTURED SURFACES

We highly recommend the use of floor pads for the successful cleaning of smooth style textured floors.

Floor pads are more effective than using scrubbing brushes as the pad makes better surface contact resulting in a better clean. Please use the below cleaning pads dependant on floor traffic:

RED PAD - LIGHT DUTY CLEANING AND MAINTENANCE

BLUE PAD - MEDIUM CLEANING AND MAINTENANCE

GREEN PAD - HEAVY CLEANING AND MAINTENANCE

Please Note: We do not recommend using industrial cleaning pads which include diamond elements as these can damage your R-Tek floor.

CHEMICAL RECOMMENDATION

ACTIVE Scrubber Dryer Detergents heavy duty formulation removes even the toughest grease and grime. Low foaming, specially designed for machines with suction driers. Ideal for cleaning large warehouses, retail outlets with heavy footfall, manufacturing locations, garages etc. rapid grease cutting ensures only one pass of the machine is required. It is critical that the correct chemical is used, as if an inferior chemical is used this may not remove all dirt and grease required, resulting in a dirty floor, which may also cause slip resistance issues.

We recommend "Scrubber Dryer Detergent" (or similar) please see details attached.

Recommended Chemical Dilution

For heavy duty scrubbing dilute 1 part to 10 parts hot water
For maintenance cleaning dilute 1 part to 80 parts hot or cold water

CORRECT SIZE OF MACHINE

It is critical to choose the correct size of machine for your environment.

There are machines to suit all sizes of floor surfaces, from 50m² to 50,000m² We can arrange a referral to cleaning and maintenance companies, who can advise regarding the correct size of machine and cleaning schedule for your floor surfaces.

If the cleaning schedule is followed, your R-TEK floor will remain clean and slip free.

View installation videos, search R-Tek Manufacturing Ltd





UK & IRELAND
259 Battleford Road, Benburb
Co. Armagh, BT71 7NP

FREE PHONE: 0800 028 4722
EMAIL: uksales@r-tekmanufacturingltd.com

www.r-tileretailflooring.com

