

## Dwelling Tile

Product Type	<b>Carpet Tile</b>
Collection	<b>Haven</b>
Style Number	<b>5T239</b>
Construction	<b>Multi-Level Pattern Loop</b>
Fiber	<b>Ecosolution Q100™ Nylon</b>
Dye Method	<b>100% Solution Dyed</b>
Primary Backing	<b>Synthetic</b>
Secondary Backing	<b>Ecworx® Tile</b>
Protective Treatments	<b>SSP® Shaw Soil Protection</b>
Recommended Adhesive	<b>LokWorx+ Carpet Tile Adhesive, Shaw 5100, Shaw 4151, LokDots, LokWorx, Shaw 3800 or Shaw 5036</b>

	u.s.	metric
Product Size	<b>9 in x 36 in</b>	<b>23 cm x 91 cm</b>
Area Per Carton	<b>45 ft<sup>2</sup></b>	<b>4.18 m<sup>2</sup></b>
Pieces Per Carton	<b>20 pcs</b>	
Gauge	<b>1/12 in</b>	<b>47.2 per 10 cm</b>
Stitches	<b>8.0 per in</b>	<b>32.0 per 10 cm</b>
Finished Pile Thickness	<b>0.122 in</b>	<b>3.1 mm</b>
Average Density	<b>6492 oz/yd<sup>3</sup></b>	<b>0.24 g/cm<sup>3</sup></b>
Kilotex		<b>11.54</b>
Total Thickness	<b>0.279 in</b>	<b>7.09 mm</b>
Tufted Weight	<b>22 oz/yd<sup>2</sup></b>	<b>745.9 g/m<sup>2</sup></b>



## Recommended Installation Method



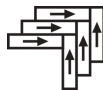
**Monolithic**



**Brick**



**Ashlar**



**Herringbone**



**Stagger**

## Coordinating Products

Carpet Tile: **Familiar Tile, Honest Tile, Identity Tile, Nest Tile, Shelter Tile**

## Data + Testing

Antimicrobial Assessment	<b>Passes (AATCC-174) (When installed using Shaw 5036 adhesive)</b>
Pill Test	<b>Pass</b>
Radiant Panel	<b>Class I</b>
Nbs Smoke	<b>Less Than 450</b>
Electrostatic Propensity	<b>Less Than 3.5 kv</b>
Cri Green Label Plus (Glp)	<b>USA GLP9968   China GLP1263</b>
Ada Compliance	<b>&gt;0.6, Meets the recommended static coefficient of friction for ADA walking surfaces and accessible routes***</b>

Test Reports may be included or listed by the manufacturing/inventory style number as opposed to the noted selling style number.

## Warranties

### Lifetime Commercial Limited

Corporate Headquarters +1 800 257 7429 | +1 706 532 7984 | Atlanta +1 404 853 7429 | Bengaluru +91 80 6773 0202 | Beijing +86 10 6568 588 | Chicago +1 312 467 1331 | Dubai +971 4 584 6956 | Hong Kong +852 2623 0371 | Latin America (Miami) +1 305 827 5912 | London +44 207 961 4120 | Los Angeles +1 800 233 1614 | Melbourne +61 3 9939 8543 | Mexico City +55 5010 7600 | Mumbai +91 22 6284 5050 | Nantong +86 400 800 7429 | New York +1 212 953 7429 | Paris +33 (0) 1 81 22 44 39 | San Francisco +1 415 955 1920 | Santiago +562 2431 5000 x 550 | São Paulo +55 11 3071 1702 | Shanghai +86 21 3338 4000 | Singapore +65 6733 1811 | Sydney +1 800 556 302

## Material Health & Environmental Certifications

Cradle to Cradle Certified®	<b>Silver Level (Version 4.0)</b>
Health Product Declaration (HPD)	<b>1,000 ppm Disclosure</b>
Environmental Product Declaration (EPD)	<b>3rd Party Certified in Accordance with ISO 14044, ISO 14025 &amp; EN15804</b>
Embodied Carbon (Cradle to Gate)	<b>4.9 kg CO<sub>2</sub>/m<sup>2</sup></b>
Life-Cycle Carbon Emissions	<b>Carbon Neutral</b>
Living Building Challenge (LBC)	<b>Free of Red List Chemicals</b>
Declare	<b>LBC Compliant USA   China</b>
NSF 140	<b>Gold</b>
CRI Green Label Plus (GLP)	<b>USA GLP9968   China GLP1263</b>
Building Research Establishment (BRE)	<b>Certified USA</b>
Good Environmental Choice Australia (GECA)	<b>Certified</b>
Singapore Green Label	<b>Certified</b>
CE Marking (EN 14041)	<b>3rd Party Certified</b>
Environmental Guarantee*	<b>Shaw Pledges to Transport And Recycle Any Ecoworx Tile or Broadloom Carpet Within The United States And Canada At No Cost to The Customer.</b>
Total Recycled Content	<b>60% (Pre-Consumer 60%   Post-Consumer 0%)</b>
Product Packaging	<b>100% Recyclable</b>
Country of Origin**	<b>USA &amp; China</b>

## green leed contribution credit

MR Credit: Building Product Disclosure and Optimization Environmental Product Declarations - Option 1: Environmental Product Declaration (EPD)	<b>3rd Party Certified in Accordance with ISO 14044, ISO 14025 &amp; EN15804</b>
MR Credit: Building Product Disclosure and Optimization Material Ingredients - Option 1: Material Ingredient Reporting	<b>G2C Silver Level (Version 4.0)</b>
MR Credit: Building Product Disclosure and Optimization Material Ingredients - Option 2: Material Ingredient Optimization	<b>3rd Party Certified in Accordance with ISO 14044, ISO 14025 &amp; EN15804</b>
MR Credit: Building Product Disclosure and Optimization Sourcing of Raw Materials - Option 2: Leadership Extraction Practices	<b>Environmental Guarantee: Shaw Pledges to Transport And Recycle Any Ecoworx Tile or Broadloom Carpet Within The United States And Canada At No Cost to The Customer.</b>
EQ Credit: Low Emitting Materials Option 1: Product Category Calculations	<b>Green Label Plus Certification: GLP9968</b>
MR Credit: Interiors Life-Cycle Impact Reduction Option 3: Design for Flexibility	<b>Ecoworx Tile with Lokdots Installation System</b>

## Additional Information

- \* To learn more about the recyclability of our products and our Environmental Guarantee, please visit [shawcontract.com/sustainability](http://shawcontract.com/sustainability).
- \*\*Meets or exceeds all local and national regulations in country of manufacture.
- \*\*\*This carpet is manufactured to be ADA compliant, but to be fully ADA compliant, the end-user must ensure the carpet is adhered to the floor and installed as outlined in the ADA standards.

[Installation Guidelines](#)  
[Maintenance Guidelines](#)

Specifications are subject to nominal manufacturing variance. Material supply and/or manufacturing processes may necessitate changes without notice.

This product is an exclusive design and may not be duplicated in any manner. Use of this design in the creation of another product design is also strictly prohibited.

Visit [shawcontract.com/testing](http://shawcontract.com/testing) for more information.



Corporate Headquarters +1 800 257 7429 | +1 706 532 7984 | Atlanta +1 404 853 7429 | Bengaluru +91 80 6773 0202 | Beijing +86 10 6568 588 | Chicago +1 312 467 1331 | Dubai +971 4 584 6956 | Hong Kong +852 2623 0371 | Latin America (Miami) +1 305 827 5912 | London +44 207 961 4120 | Los Angeles +1 800 233 1614 | Melbourne +61 3 9939 8543 | Mexico City +55 5010 7600 | Mumbai +91 22 6284 5050 | Nantong +86 400 800 7429 | New York +1 212 953 7429 | Paris +33 (0) 1 81 22 44 39 | San Francisco +1 415 955 1920 | Santiago +562 2431 5000 x550 | São Paulo +55 11 3071 1702 | Shanghai +86 21 3338 4000 | Singapore +65 6733 1811 | Sydney +1 800 556 302

© 2022 Shaw Industries Group, Inc., a Berkshire Hathaway Company  
September 11, 2022